

# 4-70 Version Notes

---

## Contents

<b>Version 4-70 (released 08-09-2011)</b>	<b>3</b>
<b>Modifications</b>	<b>3</b>
Ingenico PLD recovery changes (Internal)	3
GST on 5 Cent Rounding (Internal JT#26208)	3
TLP Referral Cards (Beacon JT#25356)	3
Add RTS Number to Good Receipt Records (Beacon JT#26467)	6
Allow Web Gift Card Orders to be Dispatched Through Enabler (Beacon JT#26342)	6
Imports operate at till level enabling ISL-FILE downloads to tills (Hallensteins JT#26145)	7
HOS file export operates at till level (Hallensteins JT#26146)	8
Promotions and Exceptions by Customer, Category and Sub-Category (Beacon Lighting JT#25957)	10
EEE Customer Edit Screen (Beacon Lighting JT#26319)	10
Application Crash when indexing Product table (Sportsco JT#26878)	11
Tax Invoice/Credit Note on docket heading for refunds (Internal)	12
<b>Client Specific Modifications</b>	<b>13</b>
<b>Bug fixes</b>	<b>13</b>
Sale Completed Ex-GST (True Alliance JT#25983)	13
Sales by SKU Report Incorrect (True Alliance JT#25884)	13
Net price not printed for refunds (True Alliance JT#26085)	13
Integrated EEE stocktakes – Freeze (Kids JT#26138)	13
PO & IBT Import Logging (Beacon JT#25992)	14
Apportioning of unbalanced G/L amounts (Internal)	14
Report file links errors (Beacon JT#26307)	15
GST 5 Cent Rounding account overstated (Internal)	15
RMW Invoice – Incorrect Heading (RM Williams JT#26329)	16
Customer Order configuration crash (Internal)	16
ISL-FILE downloads to tills (Hallensteins JT#26145)	16
<b>Version 4.70.01 (Released 14/09/2011)</b>	<b>17</b>
E-commerce customer order import enhancements (Beacon JT#27001)	17
<b>Version 4.70.02 (Released 14/10/2011)</b>	<b>18</b>
Extend Daily Banking Screen amount field (Gazal JT#26683)	18

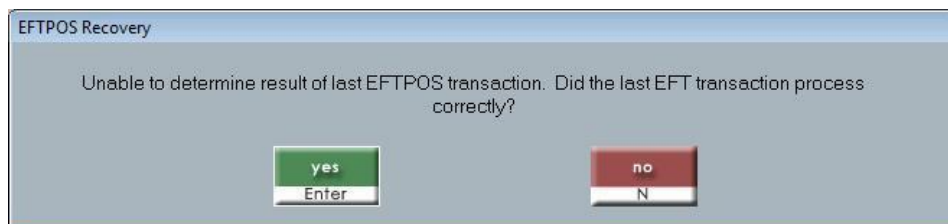
Tax amount on A4 Invoice incorrect with customr early settlement discount (R.M. Williams JT#27047)	18
<b>Version 4.70.03 (Released 25/10/2011)</b>	<b>19</b>
Duplicate invoice numbers occurring (James Richardson Duty Free JT#25996)	19
<b>Version 4.70.04 (Released 10/01/2012)</b>	<b>19</b>
PDT transfers can't be cancelled (Country Road JT#27554)	19
Local HOS record generation can lose records (Hallenstens JT#27536)	19
Master Customer Association Date (Rebel JT#27551)	20
Incorrect Salesperson Displayed (MAK Retail JT#27518)	20
Order Import from EEE Fixes (Beacon JT#27970)	20
<b>Version 4.70.05 (Released 17/02/2012)</b>	<b>21</b>
Bug Fix - Layby/Customer Orders fail to export boz files (Internal JT#28408)	21
<b>Version 4.70.06 (Released 16/03/2012)</b>	<b>21</b>
Bug Fix – Comma missing in CC record (Internal)	21
Restrict a variable Kit sale of inactive product (Lombards JT#28620)	21
Crashing of system when performing Goods Receipting (Gazal JT#27572)	22
<b>Version 4.70.07 (Released 27/03/2012)</b>	<b>22</b>
Bug Fix – Missing fields in the layby and order boz export files (Internal JT#28748)	22
<b>Hos File Changes</b>	<b>24</b>

## Version 4-70 (released 08-09-2011)

### Modifications

#### Ingenico PLD recovery changes (Internal)

In PLD recovery mode, and if an unknown result is returned from the Ingenico subsystem the following screen will be displayed.



Based on the receipt printout or other manual recovery process, the operator should indicate if the previous eftpos transaction succeeded. If the eftpos transaction succeeded the transaction will be finalised (only if balance is zero), else the tender screen will be displayed.

#### GST on 5 Cent Rounding (Internal JT#26208)

Enabler now adjusts the GST total on transactions GST-inclusive sales transactions by the amount of GST on the 5 cent rounding component. This would typically be \$0.0018 or \$0.00091 – a trivial amount. On some transactions, however, this can result in a change of \$0.01 to the total GST when rounding to the whole cent. E.g. if a sale of \$66.61 including GST is paid by cash and rounding to \$60.60 then (assuming 10% GST):

$\$66.61 / 11 = \$6.0554 \rightarrow \$6.06$  GST.

$\$66.00 / 11 = \$6.0545 \rightarrow \$6.05$  GST.

Previously, the Enabler docket would have printed \$6.06 GST; it will now print \$6.05 GST

Fixed in 4.68.02 & 4.70

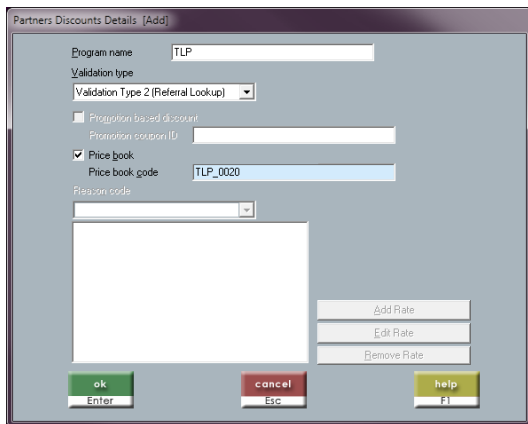
#### TLP Referral Cards (Beacon JT#25356)

##### **REQUIRES EEE 1.56**

Beacon issue “referral cards” to “tradies” – members of the TLP program. Tradies pass these referral cards along to customers (or family/friends etc). Upon presentation, referral card holders will receive a discount (standard trade prices) AND the tradie will earn points in the loyalty program. Enabler needs to support legacy referral cards which are already issued to customers as well as new referral cards that will be issued in future. Referral card discounts will be supported in Enabler by configuring a new partner discount program.

Sales > Partner Discount > Add

- Validation Type 2 (Referral Lookup)
- Price Book
  - Price Book Code



The partner program setup has been extended to allow a new partner discount type “Price book” – price books are described below. Once the partner program has been unlocked, the prices set in the selected price book will become available for the transaction. Note that if a price book is unlocked as a result of activating a partner discount (instead of associating a TLP customer to a transaction) the “markdown” flag in the price book records (which causes the price book to be treated as a gross price) will be ignored and the price book will always be treated as a discount.

Note also that a new validation type has been created

- Card must be a valid referral card
- Card must not have already been redeemed
- Card must not have expired (cards expire 2 years after issue)

These checks are all performed via Query Server. If attempting to validate a referral card while the store is trading offline or while EEE is down (these should be rare events), referral cards can either be assumed to be valid, not expired and not redeemed.

Referral Card numbers are in the format:

nnnnnnnpppp: i.e. a 7 digit sequential number followed by a random 4 digit PIN

Note that the “PIN” is just part of the card number. It is used to prevent staff from randomly “guessing” card numbers to redeem – if the card is not present then a valid card number cannot easily be guessed.

When a card has been scanned into a sale, the following must apply:

- Any line that receives a discount (or partial discount) due to the use of the referral card should have the referral card number and partner program ID stored against the LineDiscountDetail data in EEE.
- If ANY line has received any portion of a discount due to the use of the referral card:

The partner program ID number and referral card number will be recorded into the SH record and thus to SaleHeader, also to CustomerOrderHeader.

Use Query Server to flag the referral card as redeemed (upon transaction commit) and record transaction number and date/time

It is this field that will be used to apply points to the TLP member, thus ensuring that the TLP member receives points for all items in the transaction, regardless of which line items receive TLP referral discounts.

Use the field in the SH record as a batch processing backup to ensure the referral card is flagged as redeemed (this is in case the query server fails due to a transient network problem or some such).

- Note that if the card has been scanned but NO lines items benefit (receive any portion of their discount from TLP referral) then the SH record will NOT be tagged with the referral card number and Query Server will NOT be invoked – the card will thus be left unredeemed.

The referral number and partner program name are saved in order & layby header tables.

A price book in EEE is a simple “wrapper” over rows in the PriceLevel table. Introduction of the price book concept will allow:

- Otherwise customer-category-specific prices to be applied based on a partner program
- Allow a single row in PriceLevel to set the prices for multiple customer categories

Specifically, this will ease trade price maintenance for Beacon because legacy constraints (e.g. Great Plains interfaces) mandate that TLP members will be in at least two, and possible more, customer categories.

Rather than setting customer category prices, client can set price book prices and attach TLP members to the price book either through their customer record or through their customer category.

- If a customer is attached to a price book either directly or via customer category, then allow use of such rows from posprice

Honour, treat as markdown – so a pricebook can be either a discount or gross

Mod partner program to allow link to price book

Don't honour, treat as markdown – always treat as a discount regardless

## **Generic Masterfile Interface – Markdown Maintenance (MA) Record – New Field**

15 Price Book Code

C-20

### **Generic Masterfile Interface – Customer Maintenance (CC) Record – New Field**

70	Price Book Code	C-20
----	-----------------	------

### **Generic Masterfile Interface – Customer Category Maintenance (TC) Record – New Field**

08	Price Book Code	C-20
----	-----------------	------

### **Generic Logfile Interface – Layby Header (LH) Record – New Fields**

15	Partner Program Name	C-254
----	----------------------	-------

16	Partner Referral Number	C-13
----	-------------------------	------

### **Generic Logfile Interface – Customer Order Header (OH) Record – New Fields**

15	Partner Program Name	C-254
----	----------------------	-------

16	Partner Referral Number	C-13
----	-------------------------	------

### **Generic Logfile Interface – Saler Header (SH) Record – New Fields**

64	Partner Program Name	C-254
----	----------------------	-------

65	Partner Referral Number	C-13
----	-------------------------	------

### **Add RTS Number to Good Receipt Records (Beacon JT#26467)**

Goods Receipt header (GH) and Goods Receipt Line (GL) HOS records have been extended to include Return to Supplier (RTS) number for return to supplier transactions. These load through to EEE GoodsReceiptHeader.RTSNo and StockMovement.Reference4.

### **Generic Logfile Interface – Goods Receipt Header (GH) Record – New Field**

27	RTS Number	C-12
----	------------	------

### **Generic Logfile Interface – Goods Receipt Line (GL) Record – New Field**

23	RTS Number	C-12
----	------------	------

### **Allow Web Gift Card Orders to be Dispatched Through Enabler (Beacon JT#26342)**

A customer order inserted to EEE via the Web Integration Service and exported to Enabler may now contain line items for *single* gift cards. (Bulk purchase of gift cards on a single line item from the web site is not supported).

Such line items may now be converted to taken (dispatched) in Enabler. Upon converting gift card order line item to taken, Enabler displays the standard gift card issue screen (supporting only a single card) with the \$ value of the card pre-filled from the website.

The website order number is stored in the EEE VoucherTransaction table and the host interface OC record has been extended:

### **Generic Logfile Interface – Gift Card Issue (OC) Record – New Field**

30	Website order number	C-20
----	----------------------	------

Because web orders may be prepaid, it is necessary to treat finalisation of website gift card orders and any in-store payment for same as an order progress payment in the daily

balancing reports. As such, website gift card orders finalised in-store are deducted on the daily balancing reports. Any in-store payment appears on these reports as an order payment.

Enablers Daily Balancing Report has been updated to include a new GC Orders Despatched entry in the top section.

### Imports operate at till level enabling ISL-FILE downloads to tills (Hallensteins JT#26145)

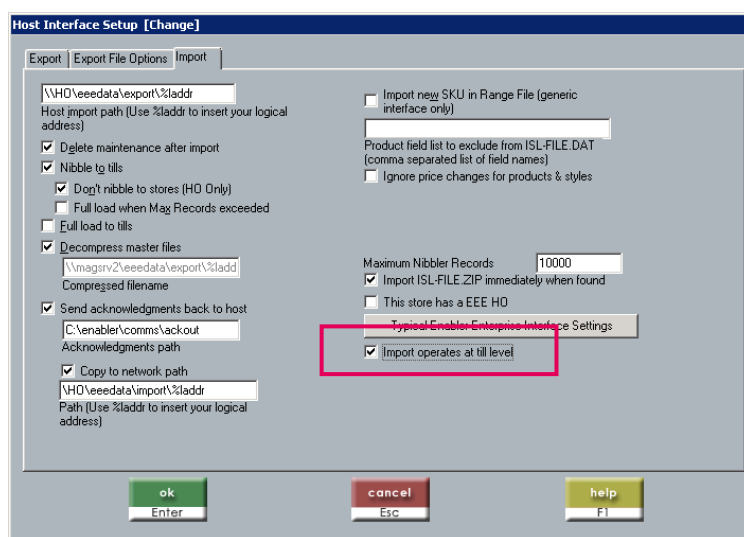
This modification removes the dependency on the store server (in multi-till environments) such that, if the store server is down, other tills can continue to receive master data updates from EEE.

### **Requires EEE 1.56 (incl. dloader.exe)**

A new configuration option has been added to the Host Interface Setup screens that controls the export and import operation at till level.

Transactions Processing/Comms → Host Interface Setup → Import

- Import operates at till level



When this new option is on, nibbler will start the file monitoring thread on each till looking for import files. This also includes the server, which will behave the same way as the tills in this mode. (Note: Nibbler needs to be restarted after changing the option).

Where as the store server would previously look for import files in the configured import path (i.e \\HO\eedata\export%\laddr), any server/till configured to import at a till level will now automatically append their till number (part of logical address) to the configured host import path and look there.

So if the server or tills logical address was 070801 (RRBBTT), instead of looking in the configured path “\\HO\eedata \export%\laddr” for ISL-FILES, it would look in \\HO\eedata \export%\laddr\01” which would translate to a real path of “\\HO\eedata \export\0708\01”. Do **NOT** add the till number to the paths, Enabler does this automatically!

Similarly, Enabler sends back acknowledgments to EEE in the same way. Whereas without this option on the server would normally write acknowledgments back to “\\HO\eedata\import\%laddr” the server or till will now right acknowledgements back to “\\HO\eedata\import\%laddr\01” which gets translated to \\HO\eedata\import\0708\01”. Again, do **NOT** add till number to the acknowledgments network export path, this is done automatically by Enabler.

Important to note that when this mode is on, Enabler includes <BranchCode>\<Till Number> in the acknowledgment going back to EEE, rather than just <BranchCode>. This is necessary for dataloader to correctly post the acknowledgement and remove the item from EEE.ExportMaintenance which now writes the Branchcode\Till# in the same way in this mode.

**Note: There is a new option in EEE that controls whether Exporter exports to tills or not. It is NOT a requirement that EEE and stores can work with the new configuration settings inconsistent between the two. You either need to have both ON, or both OFF.**

**HOS file export operates at till level (Hallensteins JT#26146)**

This modification removes the dependency on the store server (for multi-till stores) such that, if the store server is down, other tills can continue to send their transactions to EEE.

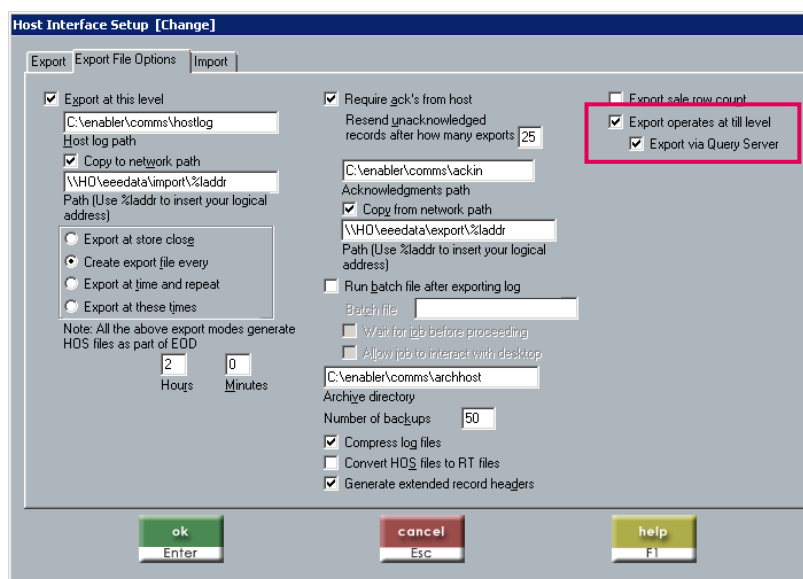
All the changes are in Enabler, Data Loader and Query Server.

**Requires EEE 1.56 (including dloader.exe & islqsrvr.exe)**

A new configuration option has been added to the Host Interface Setup screen that controls this behaviour

Transactions Processing/ Comms → Host Interface Setup → Export File Options

- Export operates at till level
  - Export via Query Server



When option **Export operates at till level** is on, all HOS records that would normally be written to the lantran\hostlog.dbf table are now written to a local\hostlog.dbf table. This also includes the server, which will behave the same way as the tills in this mode. There should be NOTHING written to the lantran version of the hostlog table.

Export and acknowledgements in are now done on a per till basis. Scheduled as well as manual export work on the local tills hostlog table, and local acknowledgements are fully supported using a local hostloga.dbf archive table.

It should be noted here that when this mode is turned on at a till, ALL of the export settings should be the same as those on the server (if not in this new mode usually these do not need to be set). This allows the till to generate records, etc as required and use the same paths as the server would with appending till number to the relevant in/out folders.

Where as the store server would previously export files in the configured import path (i.e \\HO\eedata\import\%laddr), any server/till configured to export at a till level will now automatically append their till number (part of logical address) to the configured export path

So if server or tills logical address was 070801 (RRBBTT), instead of exporting to the configured path “\\HO\eedata\import\%laddr”, it would export to “\\HO\eedata\import\%laddr\01” which would translate to a real path of \\HO\eedata\import\0708\01”. Do **NOT** add the till number to the paths, Enabler does this automatically when the new option is on.

Similarly, Dataloader sends back acknowledgments to Enabler in the same way. Whereas without this option on the EEE servers dataloader would normally write acknowledgments back to \\HO\eedata\export\%laddr” dataloader will now right acknowledgments back to \\HO\eedata\export\%laddr\01” which gets translated to \\HO\eedata\export\0708\01”. Again, do **NOT** add till number to acknowledgments network export path – this is done automatically by Enabler.

Important to note that when this mode is on, Enabler includes <BranchCode>\<Tillnumber> in the header of the HOS record going to EEE and in the acknowledgment coming back from EEE, rather than just <BranchCode>. This is necessary for dataloader to correctly resend the acknowledgement and allow Enabler to remove the item from hostloga.dbf

There is no new option in EEE that controls this; dataloader will deduce the acknowledgments path based on the branch\till passed in with the HOS record.

When the dependant option **Export via Query Server** is on, although ALL hostlog records are being written to the local\hostlog table, a slight variance occurs. All hostlog records that are part of the group for a particular transaction (i.e SH, SL, SM, TN, JN, etc) are bundled together and sent to EEE via Query Server and inserted into the EEE.inqueue table in a single transaction. In this case these records are NOT written to the local hostlog as we do not want them to be sent to EEE a second time. They are however written directly to local\hostloga.dbf in case Query Server did not successfully post them to the inqueue table and a resend is requested. Once Data Loader processes them from the inqueue acknowledgements should be written back as per normal and nibbler will remove them from the local\hostloga table.

## Promotions and Exceptions by Customer, Category and Sub-Category (Beacon Lighting JT#25957)

EEE version 1.56 has been extended to allow:

- Promotions to be enabled by Customer sub-category
- Customers to be excluded from promotions by customer, “master” customer, customer sub-category and customer category.

Enabler’s promotions logic has been extended to support these capabilities.

Order of precedence for evaluating conflicting or overlapping rules:

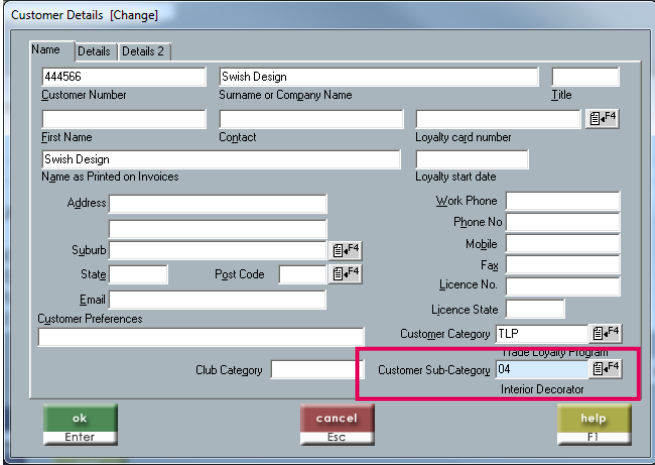
- Customer
- Master customer
- Customer sub-category
- Customer category

with exceptions evaluated before inclusions.

Note that if no explicit *inclusion* record exists then the promotion applies to all customers except those explicitly listed as exclusions. As soon as one or more explicit inclusion records exist, the promotion applies only to customers explicitly *included* unless they are *excluded* at a level of higher precedence.

As part of this development, the customer table has been extended to add the sub-category code and this is revealed only on the full version of the standard customer maintenance screen:

It is supported in the import and export interface files:



### Generic Masterfile Interface – Customer Maintenance (CC) Record – New Field

71 Sub Category C-10

### Generic Logfile Interface – Customer (CC) Record – New Field

95 Sub-Category Code C-10

## EEE Customer Edit Screen (Beacon Lighting JT#26319)

A new option has been added to customer Setup screen to determine which customer edit screen to use when editing customer record in EEE.

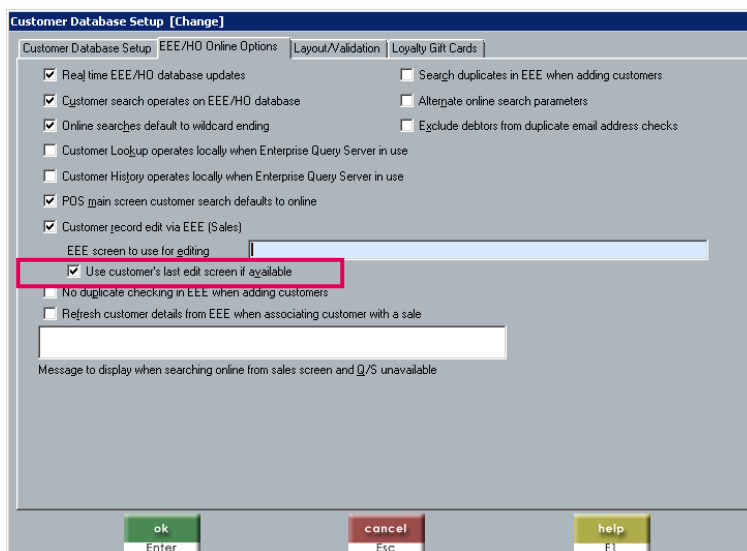
Customers → Customer Database Setup → EEE/HO Online Options Tab

- Customer record edit via EEE (Sales)
  - Use customer's last edit screen if available

When this new option is turned on, the defined EEE screen name to be used will be prefixed with “!!!” when passed into the EEE web page.

This will tell EEE to use the screen that was last used to edit the customer and only if there is no such screen:

- If the customer's category is linked to a preferred add screen then use that screen
- Else use the screen name configured in Enabler and passed to the integrated login



### **Application Crash when indexing Product table (Sportsco JT#26878)**

An interesting situation was reported that if the local\posprod.dbf table needed to be indexed and it was the first day of the month (generally), infoctrl.exe would generate an application error in the IDAP32 dll's, and crash. Note also that the Database Desktop – Borlands own utility would also crash when attempting to reindex.

It was found that if the product table was in a dBase for Windows format rather than dbase IV, the application fault was not generated.

As a result, we have converted all dBase tables (\*.dbf) in the LOCAL, LANMAST, LANTRAN & LANMNT folders to be in dBase for Windows format rather than dBase IV.

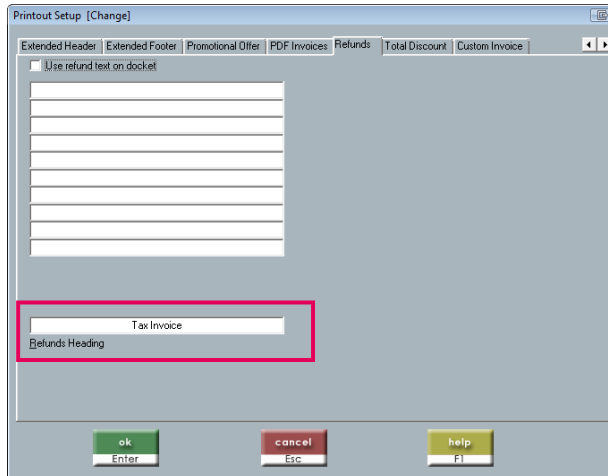
We don't believe this should have any negative impact on the Enabler application and in fact may improve stability.

### Tax Invoice/Credit Note on docket heading for refunds (Internal)

A new configuration option allows the user to configure the docket heading for Refunds.  
(This excludes A4 Invoices)

Sales → Docket setup → Refunds tab

- Refunds Heading



If the Refunds Heading field has no parameters set then the following applies.

1. If country is set as NZ it will leave the default heading to print as "Credit Note"
2. Otherwise make the default heading print as "Tax Invoice"

## Client Specific Modifications

### Bug fixes

#### Sale Completed Ex-GST (True Alliance JT#25983)

When retrieving an old Suspended Transaction, the transaction did not have embedded GST rate in the header or detail lines, and the logic to update this was not triggered.

This has now been corrected. Now when any previous transaction is reloaded (suspend, reprint, void, layby) if the transaction did not contain embedded GST rates, they will be defaulted according to the original rules.

Fixed in 4.64.10, 4.66.06, 4.68.02 & 4.70

#### Sales by SKU Report Incorrect (True Alliance JT#25884)

There was a problem with the Sales by SKU report not including all products for the selected range. This has been corrected.

Fixed in 4.68.02 & 4.70

#### Net price not printed for refunds (True Alliance JT#26085)

When configured to print Net price on the docket, it was being excluded for refund lines. This was incorrect and has been corrected.

Incorrect Example:

	\$	
FORTY NINE	-49.95	
Disc: Promotion	9.95	
Qty -1.000 @ \$40.00ea		

Correct Example:

	\$	
FORTY NINE	-49.95	
Disc: Promotion	9.95	
<b>Net Price</b>	<b>-40.00</b>	← This line was missing
Qty -1.000 @ \$40.00ea		

Fixed in 4.68.02 & 4.70

#### Integrated EEE stocktakes – Freeze (Kids JT#26138)

When trying to freeze a stocktake on the HO Server, user is prompted that the last sale line hasn't been received by EEE. This is because the last sale line recorded in lantran\posdsale.dbf at the HO is not for the HO branch, it is for another branch, having been received via normal nibbler messages. Enabler is therefore sending incorrect details to EEE. This only occurs when doing stocktake of the HO Branch.

Fixed in 4.68.02 & 4.70

## PO & IBT Import Logging (Beacon JT#25992)

Extra logging has been added to capture the import of SN (Transfers) and ISL-PO.dat data.

This is so that any potential issues that are reported can be monitored more closely and an accurate view of what is occurring on the Store Server is available.

This patch logs SN (Transfers) detail line importing, and ISL-PO.DAT (Purchase Orders) importing. This logging hooks into our already existing implog infrastructure

i.e Enabler\YYYYMMDD.implog.

## Apportioning of unbalanced G/L amounts (Internal)

Refer JT#13900 fixed in 4.43 SR7:

*The following transaction caused unbalanced G/L entries for the transaction. The discount applied to the transaction was a customer category discount defined as cost + 10. The cost price for these products was \$2.84. Performing this transaction with manual discounts of 9.55 did not recreate the issue. This has been corrected.*

April 2, 2008 17:13:39 9900011950  
Invoice: 062299007918 0622 822  
Tax Invoice

Customer Details: W95  
LAUREN HARDINGHAM

	\$	
Verao Thong*M8 W9 (AUS FLAG)	12.99	
AAS Managers Store & S. Off	-9.55	
3980903		
Verao Thong*M8 W9 (NVY)	12.99	
AAS Managers Store & S. Off	-9.55	
3980989		
Verao Thong*M8 W9 (BRN)	12.99	
AAS Managers Store & S. Off	-9.55	
3980859		
Verao Thong*M8 W9 (BLK)	12.99	
AAS Managers Store & S. Off	-9.55	
3980804		
Sub Total	\$13.76	
Rounding	\$-0.01	
Total	\$13.75	
Items 4.00		
Cash	23.75	
Change	\$10.00	

Inclusive of \$1.25 GST  
Your transaction was processed by Daniel

Part of the patch in 4.43 was to always apportion any unbalanced amounts in the G/L to firstly the GL\_DISCOUNTS account (501) in the trans, and if there wasn't one, then the GL\_SALES account (400). Previously, it would only apportion amounts up to a maximum of 2cents, otherwise leaving it as unbalanced, which would be flagged for investigation.

Further review indicated that a sensible threshold was required, so that wildly inaccurate and unbalanced transaction G/L entries were not just automatically apportioned to force the transaction to be balanced.

To this end, the threshold has been reinstated and increased to 3 cents. If the G/L accounts are out up to (& including) this maximum, it will be automatically allocated to the discount or sales accounts if they exist. Otherwise the G/L entries will be flagged as unbalanced, and an alert will be sent from EEE notifying of this fact to allow investigation.

Note also that if the discounts or sales accounts are not applicable to this transaction, nothing will be apportioned and the entries will remain unbalanced. This is new in this version, previously it would allocate to the discount account if there was one, otherwise allocating to the sales account, creating a new entry if there wasn't one already.

**Report file links errors (Beacon JT#26307)**

Beacons “Daily Banking Summary Sheet” and “Daily Banking Summary Report” reports were generating file link errors after upgrading – “Error in file links : Warning field in the report for posssale cannot be linked”.

This has been corrected in 4.68.02 & 4.70

**GST 5 Cent Rounding account overstated (Internal)**

When the 5c rounding is configured as follows:



The amount posted to the GL account “504” (5 Cent Rounding) was incorrect – it was including the GST on the rounding which it should not have been.

Consider the following transaction, \$0.90 was being posted to account 504, when it should have been \$0.82.

Bobs Pies  
HEAD OFFICE  
Level 1 / 150 Waverley Rd  
Malvern East, VIC., 3145  
Ph: +613 9571 0644  
ACN: 123-456-789  
ABN: 987-654-321  
  
July 12, 2011 12:21:07 0100044917  
Invoice: 010201010515 0102 02



## Version 4.70.01 (Released 14/09/2011)

### E-commerce customer order import enhancements (Beacon JT#27001)

Refer to “JT#24479 Beacon E-commerce Customer order Import (Beacon)” done in 4.68.

We have enhanced the import process so that:

1. It logs its actions to “YYYYMMDD.ORDImpLog” in the Enabler folder where YYYYMMDD is the current date. Example log file is below
2. It writes extra failure events to the Enabler event log.
  - When the customer on the order is not found and order cannot be imported from the staging tables
  - When detail rows are missing and order cannot be imported from the staging tables
3. Purging of \*.ORDImpLog files after 60 days.

Other addition changes are:

1. The Order Staging Table browse is now available from the Administration menu in Back Office (previously only available in POS)
2. If your Enabler installation is a HO or Store Server, there will now be a commit button that will start the process to commit any orders in the staging table (after the operator manually corrects the issues preventing the orders from being committed after import obviously). Note that the commit button send a message to nibbler to trigger it to reprocess the staging tables, so feedback will not be available in the browse, the operator will need to exit the browse and go back in to see the results, as it could be some time before nibbler processes the commit.
3. Fix up the import process so that “Order Type” is correctly populated when importing orders. Viewable from Customer Order Header browse screen.

### Example Log File:

```
14-09-2011      09:38:52:714      Version: 04.70.01  ::> *****
14-09-2011      09:38:52:715      Version: 04.70.01  ::> NDlg :: ProcessOrderStagingImport Start
14-09-2011      09:38:52:719      Version: 04.70.01  ::> NDlg :: ProcessOrderStagingImport Tables Opened
14-09-2011      09:38:52:720      Version: 04.70.01  ::> NDlg :: ProcessOrderStagingImport Reading Header Record:
078001000005
14-09-2011      09:38:52:721      Version: 04.70.01  ::> NDlg :: AllDetailRowsReceived Checking For All Rows
14-09-2011      09:38:52:722      Version: 04.70.01  ::> NDlg :: AllDetailRowsReceived Checking For All Rows:  Order#:
078001000005, iRowsExpected: 3, iActualRows: 3
14-09-2011      09:38:52:754      Version: 04.70.01  ::> NDlg :: ProcessOrderStagingImport opening transaction tables
14-09-2011      09:38:52:781      Version: 04.70.01  ::> NDlg :: ProcessOrderStagingImport checking for customer:
004499999993
14-09-2011      09:38:52:782      Version: 04.70.01  ::> CustomerExists Start:  004499999993
14-09-2011      09:38:52:786      Version: 04.70.01  ::> CustomerExists LOCAL poscust opened
14-09-2011      09:38:52:788      Version: 04.70.01  ::> CustomerExists FOUND
14-09-2011      09:38:52:789      Version: 04.70.01  ::> CustomerExists End, Returning:  TRUE
14-09-2011      09:38:52:789      Version: 04.70.01  ::> NDlg :: ProcessOrderStagingImport setting header details
```

```

14-09-2011      09:38:52:795      Version: 04.70.01  ::> NDlg :: ProcessOrderStagingImport looking for OrderDIM rows
for order: 078001000005

14-09-2011      09:38:52:796      Version: 04.70.01  ::> NDlg :: ProcessOrderStagingImport attempting ForceItemToSale
for: 078001000005 10

14-09-2011      09:38:52:935      Version: 04.70.01  ::> NDlg :: ProcessOrderStagingImport attempting ForceItemToSale
SUCCESSFUL for: 078001000005 10

14-09-2011      09:38:52:936      Version: 04.70.01  ::> NDlg :: ProcessOrderStagingImport attempting ForceItemToSale
for: 078001000005 20

14-09-2011      09:38:52:974      Version: 04.70.01  ::> NDlg :: ProcessOrderStagingImport attempting ForceItemToSale
SUCCESSFUL for: 078001000005 20

14-09-2011      09:38:52:975      Version: 04.70.01  ::> NDlg :: ProcessOrderStagingImport attempting ForceItemToSale
for: 078001000005 30

14-09-2011      09:38:52:995      Version: 04.70.01  ::> NDlg :: ProcessOrderStagingImport attempting ForceItemToSale
SUCCESSFUL for: 078001000005 30

14-09-2011      09:38:52:997      Version: 04.70.01  ::> NDlg :: ProcessOrderStagingImport Rows exist, splitting
customer order header: 078001000005

14-09-2011      09:38:53:010      Version: 04.70.01  ::> NDlg :: ProcessOrderStagingImport Rows exist, splitting
customer order lines: 078001000005

14-09-2011      09:38:53:073      Version: 04.70.01  ::> NDlg :: ProcessOrderStagingImport Rows exist, splitting
customer order lines: 078001000005

14-09-2011      09:38:53:110      Version: 04.70.01  ::> NDlg :: ProcessOrderStagingImport Rows exist, splitting
customer order lines: 078001000005

14-09-2011      09:38:53:145      Version: 04.70.01  ::> NDlg :: ProcessOrderStagingImport Rows exist, generating
MNT_CUSTORDEXPORT: 078001000005

14-09-2011      09:38:53:263      Version: 04.70.01  ::> NDlg :: ProcessOrderStagingImport Order was saved, cleaning
up

14-09-2011      09:38:53:267      Version: 04.70.01  ::> NDlg :: ProcessOrderStagingImport End

14-09-2011      09:38:53:268      Version: 04.70.01  ::> *****

```

## Version 4.70.02 (Released 14/10/2011)

### Extend Daily Banking Screen amount field (Gazal JT#26683)

The Daily Banking screen only allowed a maximum of \$9999.99 to be entered even though tables (Enabler & EEE) and interfaces supported Numeric 13,2. Screen has been modified to allow up to \$9999999.99 to be entered.



### Tax amount on A4 Invoice incorrect with customr early settlement discount (R.M. Williams JT#27047)

A mod done for client in 4.67.01 which printed amounts on the A4 Charge invoice (RMW format) net of any settlement discount due the customer. This was printing correctly, except that if multiple copies of the invoice were printed, the tax amount in the footer would be incorrect on the second and subsequent copies.

This has been corrected.

### **Version 4.70.03 (Released 25/10/2011)**

#### **Duplicate invoice numbers occurring (James Richardson Duty Free JT#25996)**

Client code specific

Client has reported an issue where duplicate invoice numbers are being issued on certain tills. This is occurring because the invoice numbers are repeatedly being reset by the EEE online parameter check.

Client has their own invoice number format:

RRBTT2SSSSS for Duty Free Transactions

RRBTT8SSSSS for Retail Transactions

Where SSSSS is the 5 digit sequential portion, and both Duty Free & Retail invoice numbers have their own seed value in local seed table (posparam).

The EEE online parameter check just checks for the highest seed value (in this case 99999) without reference to the current sale date. Thus the local seed table is repeatedly being populated with 99999 at the start of each day.

This bug fix will ensure the last invoice number after the point where the highest seed value has been reached is returned. If the highest seed value has not been reached then it should just return the last invoice number. This should ensure the online seed values are in sync with the local seed table.

### **Version 4.70.04 (Released 10/01/2012)**

#### **PDT transfers can't be cancelled (Country Road JT#27554)**

Country Road has reported an issue when attempting to Cancel from the PDT connection while in the Inventory > Stock Transfer > YMD Communication screen where the screen freezes and they are not able to return to the Stock Transfers screen to cancel and exit. The only way to exit is to use Task Manager and end the winpos.exe process.

#### **Local HOS record generation can lose records (Hallenstens JT#27536)**

When the option to generate HOS file records at a till level is turned on, the potential to lose HOS records for a transaction existed. What could occur is that the HOS export process ran at same time as trying to save local transaction HOS records, causing file to be locked and the HOS records never written.

This has been corrected now has two failover mechanism's to ensure HOS records are not lost using enabler\local\hostlogbu.dbf and enabler\hostlogbu.txt

### **Master Customer Association Date (Rebel JT#27551)**

Master Customer Association Date is displayed on tab 3 of the customer maintenance screen. This is not available when editing a customer in POS.

Due to the nature of its screen representation, it could cause a customer record to be saved with a blank date, overwriting the valid value that was previously there. As simply as saving the record but not being on that tab of the screen – if you were on that tab (i.e in BO), it was saved successfully.

This has been fixed.

In addition, full support has been added for importing this record via the CA/CC records in the ISL file.

In addition, Dataloader in 1.56.06 now has support for importing this field into EEE – Enabler already exported the field, just that dataloader did nothing with it. Also in same version, Exporter now exports the field to Enabler – IMPORTANT: EEE 1.56.06 required for Enabler to import the field.

Enabler already updated the field in EEE when updating online via query server, and also retrieve the field when doing an online customer refresh.

### **Incorrect Salesperson Displayed (MAK Retail JT#27518)**

MAK Retail had an issue whereby when the sales person logged into the transaction, although the logged in users name was correct, the displayed salesperson name was not.

### **Order Import from EEE Fixes (Beacon JT#27970)**

There is a bug re line numbers. In fact, there are two:

a. Enabler assigns the order line numbers based on the sequence in which lines are imported. This is dangerous in the extreme. This has been fixed to force the line numbers in each line to match the line numbers in EEE, otherwise Enabler and EEE can end up with different line numbers meaning the order in EEE will never update correctly with subsequent POS transactions.

b. When processing rows from the orderdim.dbf table Enabler does so by index on od\_num+od\_lineno - od\_lineno is char and so we process lines 1, 10, 11, 2, 3, 4 etc - meaning that this forces the bug (a) to be activated whenever an order with > 9 line items is imported. EEE's line number 10 will import to Enabler as line number 2.

This has been corrected.

## **Version 4.70.05 (Released 17/02/2012)**

### **Bug Fix - Layby/Customer Orders fail to export boz files (Internal JT#28408)**

Layby and customer order payments fail to trigger the export of layby/customer order tables via the boz file mechanism. As payments cause changes in the layby/customer order tables, any payment should create a BO hos record which exports boz files to EEE. Also when a qL (Layby Payment) record is imported a BO hos record should be created and a boz file should be exported to EEE.

As part of the fix, a migration process has been created whereby any layby/order payments made after the layby/order was created will generate a boz file to be processed by DataLoader. This should only occur once as part of the migration process. The migration only applies to store servers.

Also when importing layby/order files in BackOffice, any failure in decompressing or accessing the layby/order tables creates an event log entry. The event log entry was causing a bug if the file path used for importing layby/order files was more than 56 characters. Now the file path will be truncated if it exceeds 56 characters.

Fix also available in 4.66.06, and 4.72.05.

## **Version 4.70.06 (Released 16/03/2012)**

### **Bug Fix – Comma missing in CC record (Internal)**

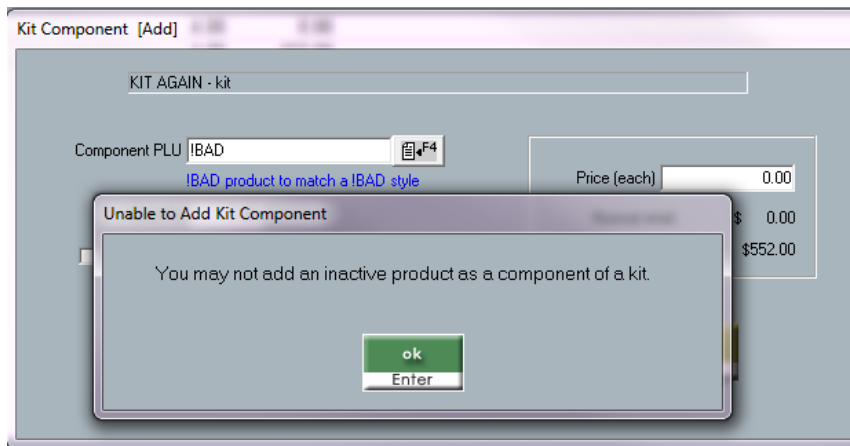
If the Master Customer Date field is populated in the Customer Details screen any changes to the customer record generated a CC HOS record which was missing a comma in the second last field. This caused D/L errors.

Fix also available in 4.72.07, and 4.74.02.

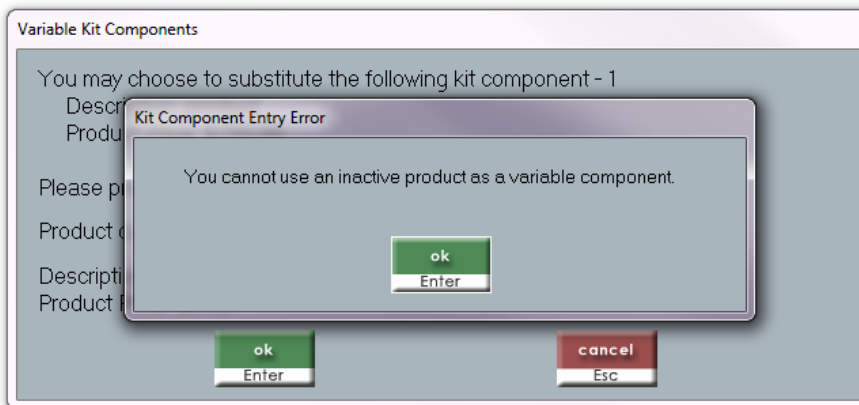
### **Restrict a variable Kit sale of inactive product (Lombards JT#28620)**

An inactive product should not be sold as part of a variable product in a kit and should not be added as a Component PLU to a KIT product. These bugs have been fixed.

Adding a product code as a variable KIT component is now disallowed if the product selected is flagged as inactive. The following prompt will now display to advise the user.



Adding an inactive product code as a variable kit component to sale is disallowed and the following prompt will now display informing user of this.



Fix also available in 4.72.07, and 4.74.02.

### **Crashing of system when performing Goods Receipting (Gazal JT#27572)**

Client was experiencing intermittent crashes of point of Sale at the point of printing goods receipt transactions. It was found that if the print function from the purchase order browse option via the POS inventory menu was used, it could cause instability in Enablers hardware module, causing the crash. This has been fixed. In addition we have tidied up a number of areas where the hardware module is used for printing.

Fix also available in 4.72.07, and 4.74.02.

### **Version 4.70.07 (Released 27/03/2012)**

#### **Bug Fix – Missing fields in the layby and order boz export files (Internal JT#28748)**

Missing fields have been found in the order and layby boz export database files. The ohexport, odexport, lhexport, ldexport and liexport boz export files have been updated to include the required fields.

As part of the fix, a migration process has been created whereby all open orders/laybys will be exported to EEE to ensure all order/layby boz files in EEE are up to date. This should only occur once as part of the migration process. The migration only applies to store servers.

The order/layby migrate process introduced in version 4.70.05 will not be applied because the current migrate will include all the orders/laybys which were exported by the previous migrate.

Fix also available in 4.72.08 and 4.74.03

## Hos File Changes

### Generic Masterfile Interface – Markdown Maintenance (MA) Record – New Field

15 Price Book Code C-20

### Generic Masterfile Interface – Customer Maintenance (CC) Record – New Field

70 Price Book Code C-20

### Generic Masterfile Interface – Customer Category Maintenance (TC) Record – New Field

08 Price Book Code C-20

### Generic Logfile Interface – Layby Header (LH) Record – New Fields

15 Partner Program Name C-254

16 Partner Referral Number C-13

### Generic Logfile Interface – Customer Order Header (OH) Record – New Fields

15 Partner Program Name C-254

16 Partner Referral Number C-13

### Generic Logfile Interface – Saler Header (SH) Record – New Fields

64 Partner Program Name C-254

65 Partner Referral Number C-13

### Generic Logfile Interface – Goods Receipt Header (GH) Record – New Field

27 RTS Number C-12

### Generic Logfile Interface – Goods Receipt Line (GL) Record – New Field

23 RTS Number C-12

### Generic Logfile Interface – Gift Card Issue (OC) Record – New Field

30 Website order number C-20

### Generic Logfile Interface – Customer (CC) Record – New Field

95 Sub-Category Code C-10